



Rear Bumper

Functional solutions in high-quality design

The strong solution at the market

Individually adapted for optimal use

Certified production

In Denmark Ermax produces the complete rear bumpers according to the "Kraftfahr Bundesamt" certified "Conformity of Production". Each variant of the rear bumper is individually adapted. This ensures optimal positioning of the lights and perfect cable structure. This saves weight and increases the life time of the components.

Highlights

- TM10 & TM5 with impact resistant lens made of polycarbonate
- Easy demounting - just one interface
- The rear bumper can be lacquered
- Integration of
 - LED Control unit
 - SIMAC® control
 - Junction box
- Certified according to all relevant standards and regulations in Europe (ECE R58 Rev. 02)



ERMAX®

High-quality design - various applications

The new versions of the Ermax rear bumper consist of four design variants.

The different versions are available with the following options: LED control unit, SIMAC control (flashing side marker lights), with or without junction box. You will find information about the various types on the following pages.

All variants are supplied with a protection cover over the junction box as well as the connectors of the tail lights.

The rear bumper consists of an anodised aluminum profile, which can be individually lacquered in the color of the vehicle.



TM5



TM7



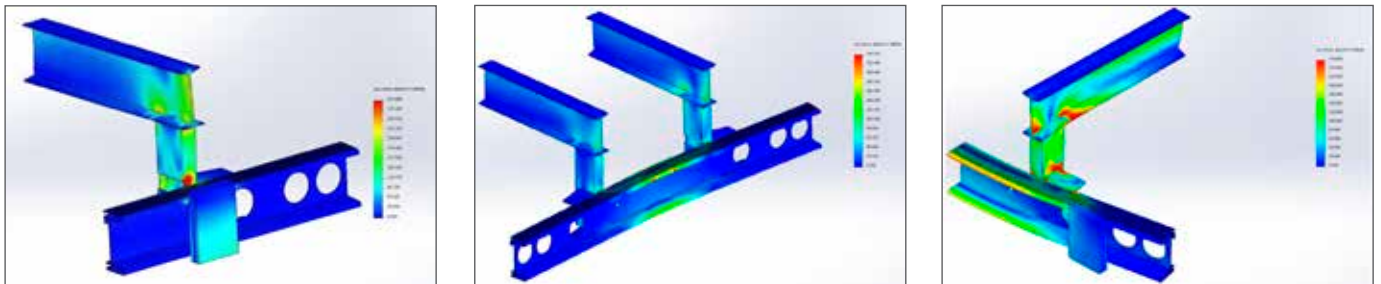
TM10 Hybrid



TM10 Full LED

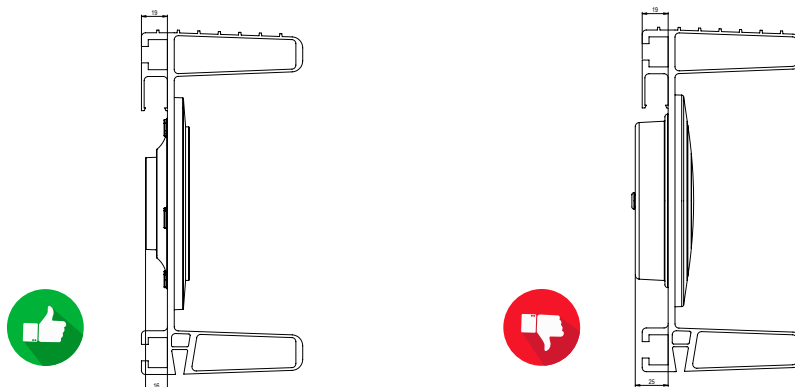
These reasons speak for Ermax

The development and design of the system is supported by CFD & CAE Engineering to ensure optimum impact strength of the ECE-tested rear bumper.



Intelligent Design

The intelligent design of the rear bumper ensures that even built-in lights don't protrude beyond the rear bumper. This gives you the full width of the chassis frame and ensures maximum flexibility when mounting and the planning the vehicle.



Safe delivery

Before forwarding the rear bumper is tested in every way and packed individually in a padded box. This in order to minimize transport damage and to ensure a safe and optimal transport.



Production of the rear bumper



Ermox Rear Bumper With TM5 tail lights

Unbeatable durability

- Space-saving – ultra slim built-in depth of the TM5 tail lights
- Unsurpassed durability - impact resistant lens made of polycarbonate
- Increased traffic security – Eternal Light technology



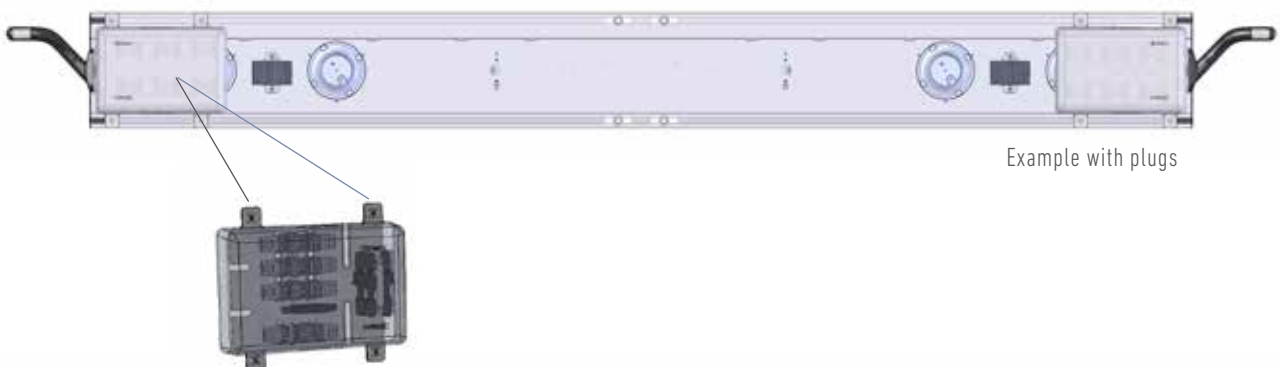
Article No.	Junction box	SIMAC	LED failure control
098 258 100	-	-	-
098 258 110	-	-	✓
098 258 120	-	✓	-
098 258 130	-	✓	✓
098 258 140	✓	-	-
098 258 150	✓	-	✓
098 258 160	✓	✓	-
098 258 170	✓	✓	✓



All plugs are IP69K approved for use at the rear area of the vehicle.

In order not just to secure a long-lasting functionality but also a long-lasting protected installation, every system with plugs also has a cover solution.

For solutions with junction box, a protective cap is mounted over the box.



Example with plugs



Example with plugs

Ermax Rear Bumper With TM7 tail lights

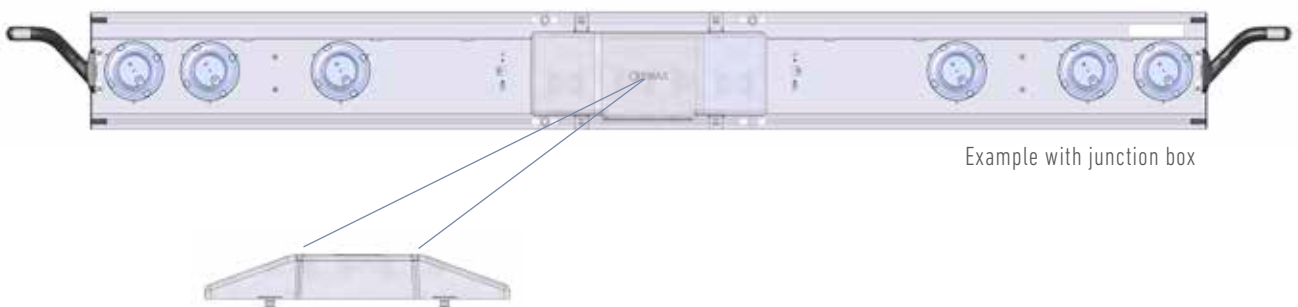


Classical solution

- Space-saving – low built-in depth of the TM7 tail lights
- Easy mounting
- Classical LED look



Article No.	Junction box	SIMAC	LED failure control
098 258 200	-	-	-
098 258 210	-	-	✓
098 258 220	-	✓	-
098 258 230	-	✓	✓
098 258 240	✓	-	-
098 258 250	✓	-	✓
098 258 260	✓	✓	-
098 258 270	✓	✓	✓



Example with junction box



Example with junction box

Ermamax Rear Bumper With TM10 tail light

All included - and also impact resistant

- Unsurpassed durability - impact resistant lens made of polycarbonate
- Increased traffic security - Eternal Light technology
- High degree of credibility - LED control unit and built-in SIMAC (optional)

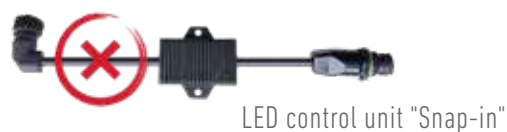


Article No.	Junction box	SIMAC	LED failure control
098 258 300	Hybrid *	-	NA
098 258 320	Hybrid *	✓	NA

098 258 400	LED	-	-
098 258 430	LED	✓	✓

* Position- and license plate light as LED

With the TM10 tail light the Ermamax rear bumper has a real allrounder on board: further to the standard functions the TM10 also has an optional LED indicator failure control and a flash function for the side marker lights (SIMAC) integrated in the light housing - mounting will never be easier!



The Lighting System

As supply source for other electrical applications

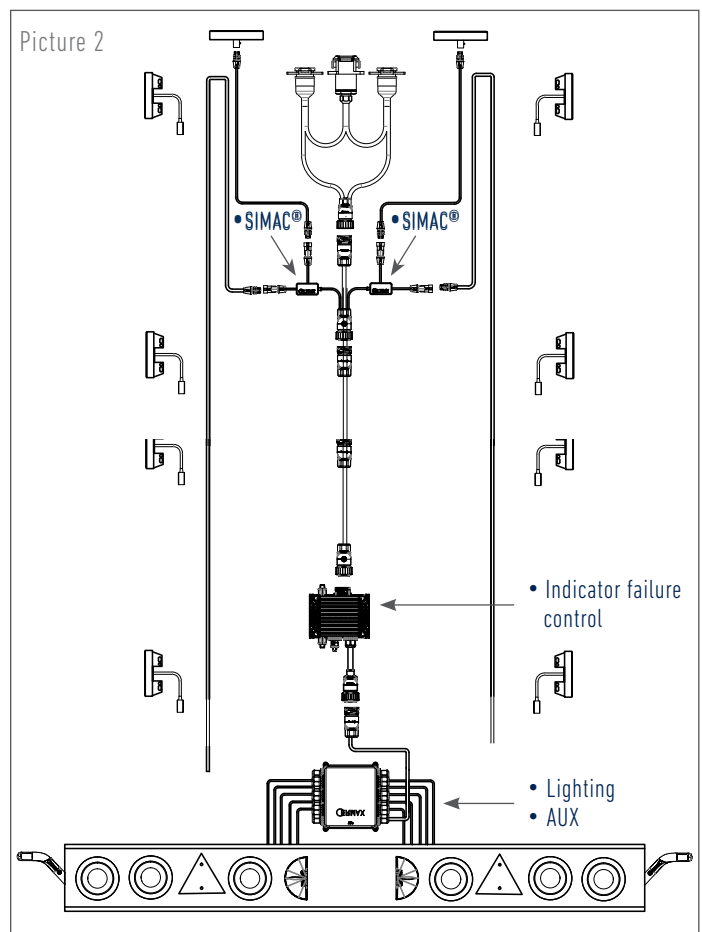
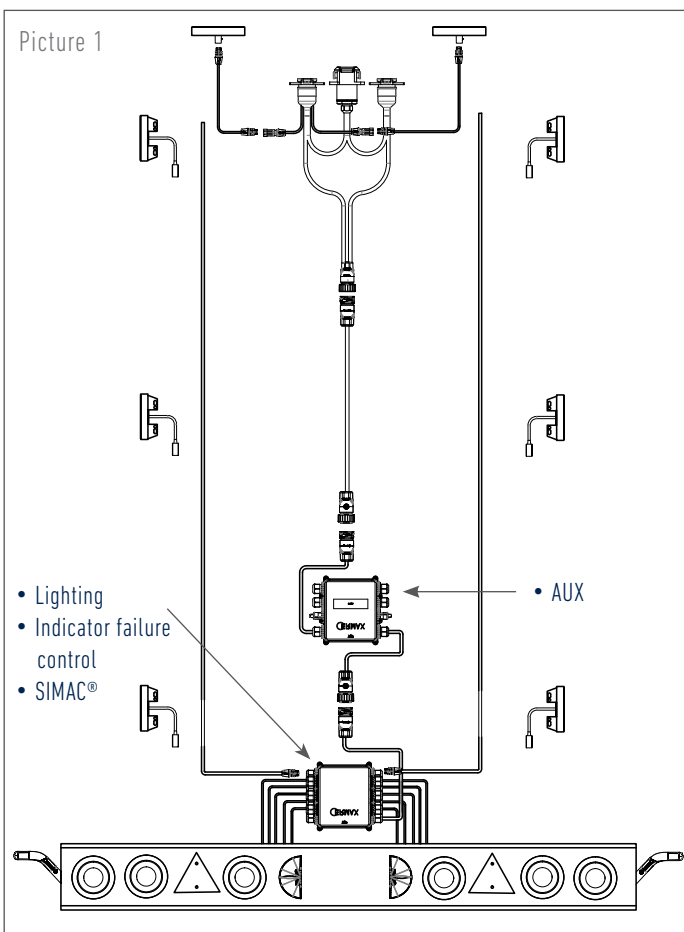
Flexibility & long-lasting benefits

The Ermax lighting- and rear bumper systems offer the best possible conditions for other electrical sources of additional systems e.g. lift axles, reverse alarm etc., to take over the existing Ermax lighting. These can be removed from the cable source or connected to the junction box on the rear bumper.

The legal requirement regarding lighting systems on a vehicle are still increasing. With Ermax systems, this intelligence can be integrated in the junction box at the rear bumper. The requested additional functions by the legal requirements (e.g. AUX) are to be taken from a junction box inserted in the main cable in the front of the rear bumper (picture 1).

The flexibility of the Ermax configuration makes it possible, however, that the functions concerning the indicator failure control and SIMAC (the flashing side marker lights) can be inserted elsewhere in the system. With this configuration it is possible to use the AUX connections in the junction box on the rear bumper (picture 2).

Examples of Ermax configuration



Ermax is your reliable partner for high quality lighting systems

Ermax® is the exclusive brand for lighting systems of high quality and complete cable systems for vehicles. With innovative research and development Ermax® has strengthened the position as significant OEM manufacturer based on the 70 years of experience within the electric and lighting segment. The Ermax® product programme is available for OEM as well as aftermarket.

Brands of the BPW Group:



ERMAX®



HESTAL®



 **ERMAX**®
"Light Made Heavy Duty"

Transport-Teknik A/S
Vranderupvej 2 • DK-6000 Kolding
Bjerringbrovej 116 • DK-2610 Rødovre
Tlf. +45 7552 5200 • Tlf. +45 3969 6800
www.ermx.dk