



# GOODYEAR

## NEW KMAX T GEN-2

OCTOBER 2019

GOODYEAR

# KMAX T GEN-2

## Tread Design

### Feature

5-rib tread design 385/65R22.5  
(6- and 7-rib with other sizes)

### How it works

Optimized rib layout to ensure even contact pressure distribution and shoulder robustness with all tyre sizes

### Advantage

Damage and wear resistance for high mileage and long service life under severe conditions



# KMAX T GEN-2

## Deep Sipes

### Feature

Deep sipes down to 2/3 of the full tread depth

### How it works

Sipes create additional biting edges to interlock with the road surface until late life

### Advantage

3PMSF marking; compliance with most restrictive winter legislations; short braking distances and improved wet grip throughout tire life; no compromise on mileage or other performance criteria



# KMAX T GEN-2

## Tread pattern evolution 385/65R22.5

new

1/3 worn

2/3 worn

worn out

KMAX T



KMAX T  
GEN-2



Constant tread design look with sipes down to 2/3 of the tread depth

# KMAX T GEN-2

## IntelliMax groove technology

### Feature

IntelliMax groove blade design

### How it works

Teardrop shaped bottom blade design to avoid groove cracking in high scrubbing trailer applications

### Advantage

Robust tread design in demanding applications; high removal mileage



# KMAX T GEN-2

## Tread Compound

### Feature

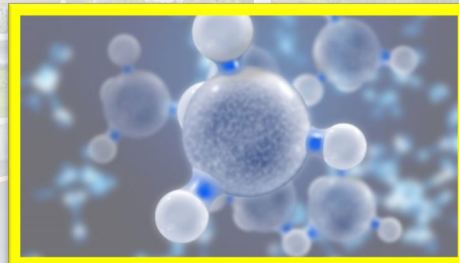
Cool running/high abrasion resistant tread compound

### How it works

The chemical formulation and polymer network ensure a good rolling resistance combined with excellent resistance against treadwear and lateral scrubbing.

### Advantage

High mileage and fuel efficiency



# KMAX T GEN-2

## New Sidewall Design

Upgraded sidewall with a modern, easy to read look including clear size identification



Size zone

NEW!

Branding zone incl. RFID logo

Legal marking zone

# NEW IDENTIFICATION POSSIBILITIES

## Radio Frequency Identification

### Feature

RFID tags are integrated in all new generation tyres

### How it works

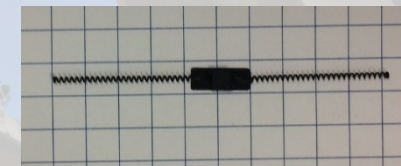
An RFID tag is embedded inside the tyre and allows simple identification and connectivity to tyre management and tracking systems.

The RFID contains ISO standard information as per SGTIN96 coding .

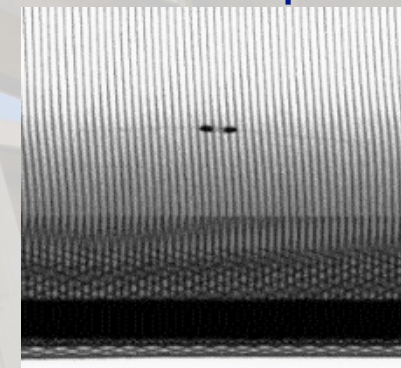
### Advantage

Tyres can communicate with a cloud network on an individual serial number level and allow therefore a much better tyre flow management.

Key element for **Goodyear Total Mobility**



RFID chip



embedded in the tyre

RFID logo:



On Non Serial Side



On Serial Side





# GOODYEAR

Thank you for your attention