

JOST

Repair kits

Original-Spare parts

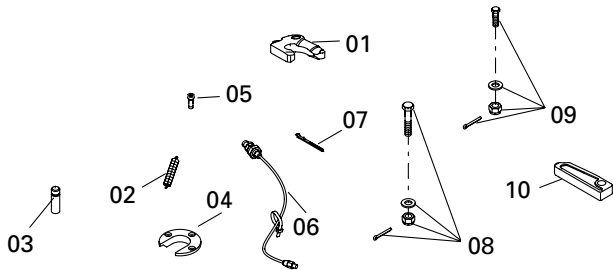


- Original parts for safety
- Suitable for a number of ranges
- Quick and easy repairs
- Cardboard packaging for ease of use
- Mounting instructions

JOST Repair kit for lock

SK 3121-072 Z

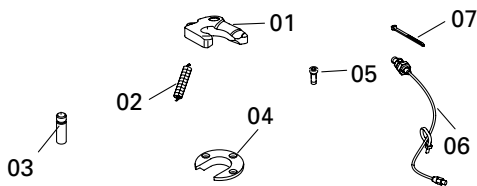
Fifth wheel couplings from ranges JSK 37 A/AZ/C/CZ/EA/ER [EA/ER up to Serie 31]



Kit	Order No.	Designation	Quantity per JSK
01	SK 1489 Z	lock jaw	1
02	SK 847	tension spring	1
03	SK 2106-67	bolt	1
04	SK 2105-19	wearing ring	1
05	SK 2121-07	socket head bolt	3
06	SK 3108-02	lubrication pipe with 07	1
07	SK 3121-13	cable tie	1
08	SK 3221-01	bar bolt	1
09	SK 1513	hexagon bolt, compl.	1
10	SK 3205-06	locking bar	1

SK 3221-50 Z

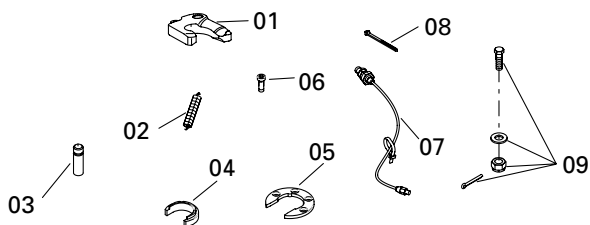
Fifth wheel couplings from ranges JSK 37 A/AZ/C/CZ/E/EA/ER/ME 140 [E/EA/ER/ME 140 up to Serie 31]



Kit	Order No.	Designation	Quantity per JSK
01	SK 1489 Z	lock jaw	1
02	SK 847	tension spring	1
03	SK 2106-67	bolt	1
04	SK 2105-19	wearing ring	1
05	SK 2121-07	socket head bolt	3
06	SK 3108-02	lubrication pipe with 07	1
07	SK 3121-13	cable tie	1

SK 3121-60 Z

Fifth wheel couplings from ranges JSK 37 CW/EW/EA/ER/ERW/ME 140/ME 140W [E/EA/ER/ME 140 from serie 34]

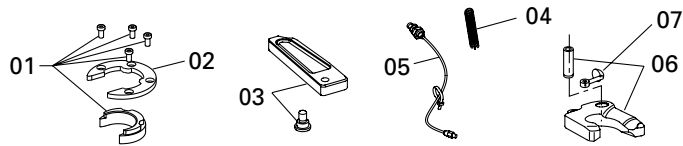


Kit	Order No.	Designation	Quantity per JSK
01	SK 1489 Z	lock jaw	1
02	SK 847	tension spring	1
03	SK 2106-67	bolt	1
04	SK 3105-92	wearing part	1
05	SK 3105-93	mounting ring	1
06	SK 3121-55	socket head bolt	4
07	SK 3108-02	lubrication pipe with 08	1
08	SK 3121-13	cable tie	1
09	SK 1513	hexagon bolt, compl.	1

JOST Repair kit for lock (continuance)

SKE 001640020

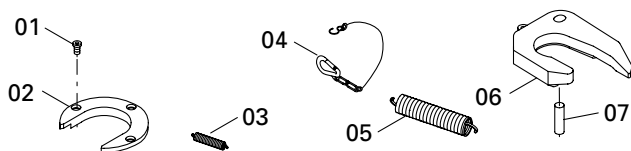
Fifth wheel couplings from ranges JSK 42 K...



Kit	Order No.	Designation	Quantity per JSK
01	SKE 001740020	wearing part + mounting bolt	1
02	SK 3105-94	mounting ring, with 01	1
03	SKE 001009720	wearing ring + mounting bolt	1
04	SK 847	tension spring	1
05	SK 3108-02	lubrication pipe, compl. with Cable tie	1
06	SK 3221-52 Z	lock jaw, with 04 + 05	1
07	SK 2122-04	eye bolt, compl.	1

SK 2421-76

Fifth wheel couplings from ranges JSK 38 C1/G1, 3 1/2"

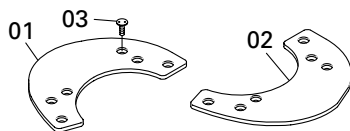


Kit	Order No.	Designation	Quantity per JSK
01	SK 2421-08	socket head bolt	3
02	SK 2421-56	wearing ring 3 1/2", compl. with 01	1
03	SK 2106-01	tension spring	2
04	SK 1436	spring hook, compl. up to xx60xxxxxx	1
05	SK 2405-23	double tension spring	1
06	SK 2405-14	lock jaw 3 1/2"	1
07	SK 2405-18	bolt	1

JOST Repair kit for top plate

SK 3106-003

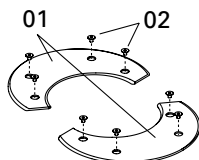
Low-maintenance fifth wheel couplings from ranges JSK 37 ...W



Kit	Order No.	Designation	Quantity per JSK
01	SK 3105-129L	top Plate left	1
02	SK 3105-129R	top Plate right	1
03	SKE 001006000	countersunk bolt	12

SKE 001007020

Low-maintenance fifth wheel couplings from ranges JSK 42 K...

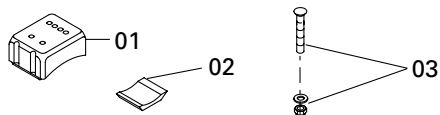


Kit	Order No.	Designation	Quantity per JSK
01	SKE 001007020	top Plate compl. with 02	1
02	SKE 001006000	countersunk bolt	8

JOST Repair kit for bearing

SK 2121-69 C-bearing

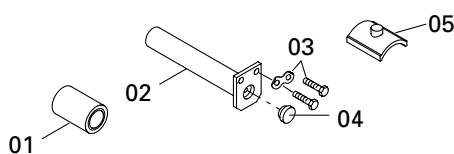
Fifth wheel couplings from ranges JSK 37 C/CZ



Kit	Order No.	Designation	Quantity per JSK
01	SK 1259	rubber cushion, upper	2
02	SK 2105-25	rubber cushion, lower	2
03	SK 2121-15	countersunk bolt, compl.	8

SK 3121-61 E-bearing

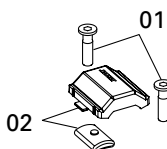
Fifth wheel couplings from ranges JSK 37 E/EW/EA/ER/ERW/ME140/ME140W



Kit	Order No.	Designation	Quantity per JSK
01	SK 2905-94	rubber bushing, compl.	2
02	SK 3104-05	bearing bolt with 04	2
03	SK 3121-071	hexagon boltn, compl.	2
04	JS1101-12	plug	2
05	SK 3105-95	collar	2

SKE 001370220 K-bearing

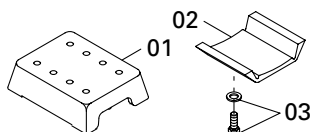
Fifth wheel couplings from ranges JSK 42 K0-K6



Kit	Order No.	Designation	Quantity per JSK
01	SKE 001011400	bolt	4
02	SKE 001370020	collar, compl. with 01	2

SK 2421-78 C1-bearing

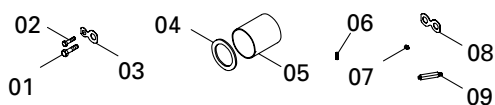
Fifth wheel couplings from ranges JSK 38 C/CZ



Kit	Order No.	Designation	Quantity per JSK
01	SK 2006	rubber cushion, upper	2
02	SK 2007	rubber cushion, lower	2
03	SK 2421-55	hexagon bolt, compl.	8

SK 2521-76 G1-bearing

Fifth wheel couplings from ranges JSK 38 G/GZ

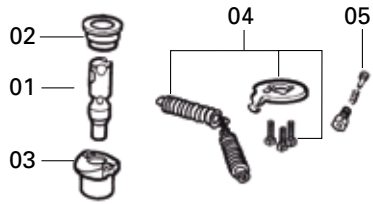


Kit	Order No.	Designation	Quantity per JSK
01	SK 2034	hexagon bolt	4
02	SK 2521-18	hexagon bolt	2
03	SK 2504-21	locking plate	2
04	SK 2521-07	round seal	6
05	SK 2504-16	bearing bush	4
06	SK 1533	cylindrical notched pin	8
07	SK 2521-04	taper grease nipple	6
08	SK 2504-20	locking plate	1
09	SK 2521-57	taper grease nipple + extension	1

ROCKINGER Repair kits

ROE 71123

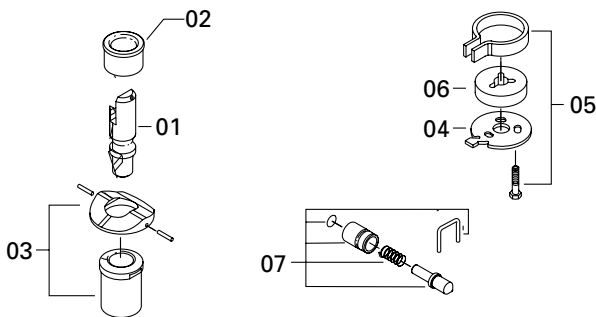
Repair kit from ranges 260



Kit	Order No.	Designation	Quantity per AHK
01	ROE47012	coupling pin	1
02	ROE53293	upper bush	1
03	ROE67260	lower bush with plastic buffer	1
04	ROE70721	base plate set	1
05	ROE67796	indicator	1

ROE 71124

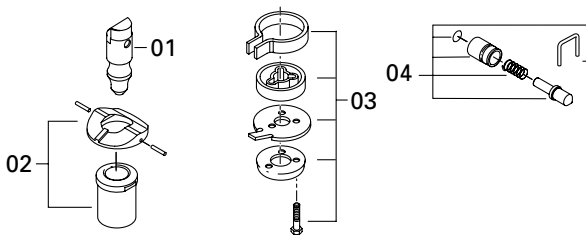
Repair kit from ranges 400, 430 (up to technical level 0)



Kit	Order No.	Designation	Quantity per AHK
01	ROE47099	coupling pin	1
02	ROE53520	upper bush	1
03	ROE53519	lower bushing with a brass bearing ring	1
04	ROE65626	base plate	1
05	ROE55256	base plate set	1
06	ROE53467	guide bush	1
07	ROE70925	safety system	1

ROE 71125

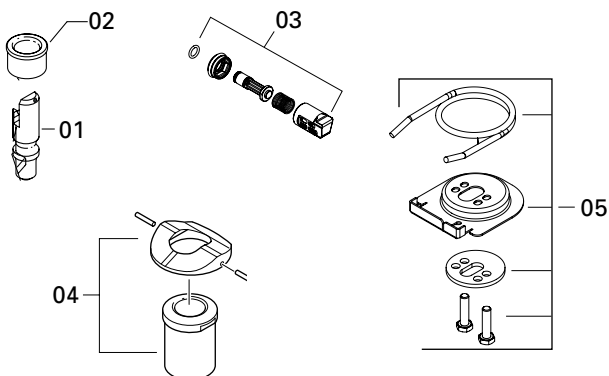
Repair kit from ranges 500, 530, 560 (up to technical level 3)



Kit	Order No.	Designation	Quantity per AHK
01	ROE47081	coupling pin	1
02	ROE53490	lower bush with wearing ring (bronze)	1
03	ROE65693	base plate set	1
04	ROE70925	safety system	1

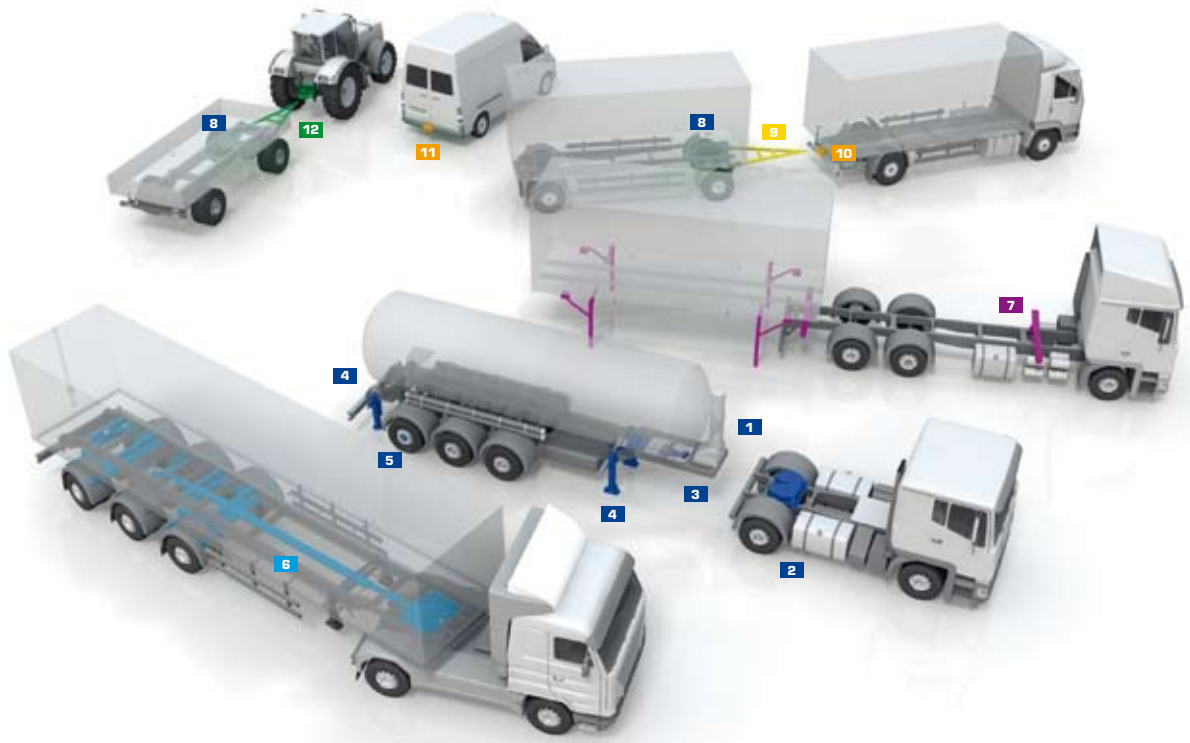
ROE 71728

Repair kit from ranges 400-1/430 (up to technical level 1)



Kit	Order No.	Designation	Quantity per AHK
01	ROE47099	coupling pin	1
02	ROE53520	upper bush	1
03	ROE71491	safety system	1
04	ROE71718	lower bushing with a brass bearing ring	1
05	ROE71331	base plate set	1

Products



1 Systems

Sensor-controlled systems monitor and automate manual processes, thus providing for more safety and efficiency in your fleet.



2 Fifth wheel couplings

We offer a wide selection of fifth wheel couplings, 2" and 3 1/2" in a wide variety of mounting heights, bearing types and models. The program is completed by mounting plates, sliders and dual height fifth wheel systems.



3 King pins

King pins are available in 2" and 3 1/2" for all systems in various models.



4 Modul landing gear

Any customer specs can be fulfilled thanks to the landing gear's modular construction with variable mounting and bolting heights, its differing crank and connection shaft lengths and its four different foot types. Furthermore, JOST offers a multitude of special landing gears for special applications.



5 Hubodometer

The range of products includes various hubo-dometers for calculating the distance driven, independent of the vehicle, for all types of wheeled vehicles.



6 TRIDEC

TRIDEC develops and produces independently manufactured mechanically and electronically controlled steering systems for trailers and wheel suspension systems.



7 Container equipment

Parts for alternating systems, supports, locks and bolsters, swap body lifting devices, guide rollers and bearings – all components required in a flexible fleet.



8 Ball bearing turntables

The ball bearing turn tables and slewing rings were the first products that JOST produced. The wide range of top-quality ball bearing turntables is based on this experience.



9 Drawbars and drawbar eyes

Drawbars and towing eyes are available in various models and can be designed to suit the customer's specific needs.



10 Towing hitches

There is a multi-faceted range of products for road traffic available – towing hitches, hook trailer hitches, towing eyes, accessories and special models.



11 VARIOBLOC

VARIOBLOC is a multi-functional alternating system for transporters, cross-country vehicles and busses. Courtesy of a quick-change plate, it enables towing hitches, hitch balls or hook trailer hitches to be changed rapidly.



12 Agricultural hitches

An extraordinarily extensive range of products for agriculture and forestry: Towing hitches, trailer trestles, clutch carriers, towing eyes, drawbars and accessories.

JOST



REGENSBURGER
ZUGGABEL

