

# Modul E-Drive

**JUST**

The electric landing gear for  
increased comfort and safety



# Modul E-Drive – The electric landing gear



**Manual cranking is now a thing of the past!**

**More comfort – even when accessibility of the landing gear is limited**

*With the electric landing gear Modul E-Drive, JOST sets new standards in convenience, workplace safety and efficiency. It is particularly useful when access to the landing gear is restricted and when the trailer needs to be coupled or decoupled frequently. In addition to the tried-and-tested Modul quality, the Modul E-Drive boasts many other outstanding features, such as supporting operators and improving the fleet's availability day in and day out.*

## **Useful and convenient**

- Easier coupling and decoupling of the trailer
- Highly useful for limited accessibility and confined spaces
- Electric raising and lowering of the landing gear
- Perfectly suited to and highly useful in frequent coupling operations

## **Simple and functional**

- Simple operation at the push of a button
- Drive shuts down automatically in the event of ground contact
- Differences in height between the truck and the trailer can be compensated using the vehicle's pneumatic suspension or manual cranking in the low gear.
- Manual operation still possible

## **Efficient and reliable**

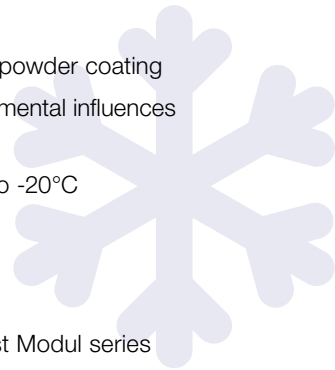
- Time savings during decoupling
- Thanks to the long-term lubrication applied in the factory, re-lubrication is only necessary after three years
- Maintenance-free, patented drive on the inside

## **Robust and durable**

- Outstanding surface quality thanks to powder coating
- Long-lasting protection against environmental influences and falling rocks
- Suitable for outside temperatures up to -20°C

## **Proven modular system**

- Based on the highly reliable and robust Modul series
- Various mounting heights with an especially large lift
- Comprehensive range of cranks and connection shafts
- Easily mountable and replaceable foot system
- Significant increase in lifting capacity compared to similar products
- Easy and proven mounting procedure





S foot  
(standard)

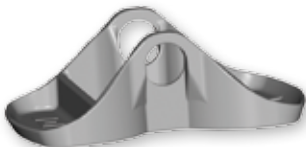


#### Technical Data (per kit)

Characteristic	Value
Lifting capacity*	24 t
Static test load	50 t
Lift per turn of handle	
- Low gear*	0,9 mm
- High gear*	15,0 mm
Crank force per crank at 16 t lifting capacity*	210 N
Power supply protection	24 V min. 15 A

\* if operated manually

TC foot  
(low disc)



T foot  
(disc)



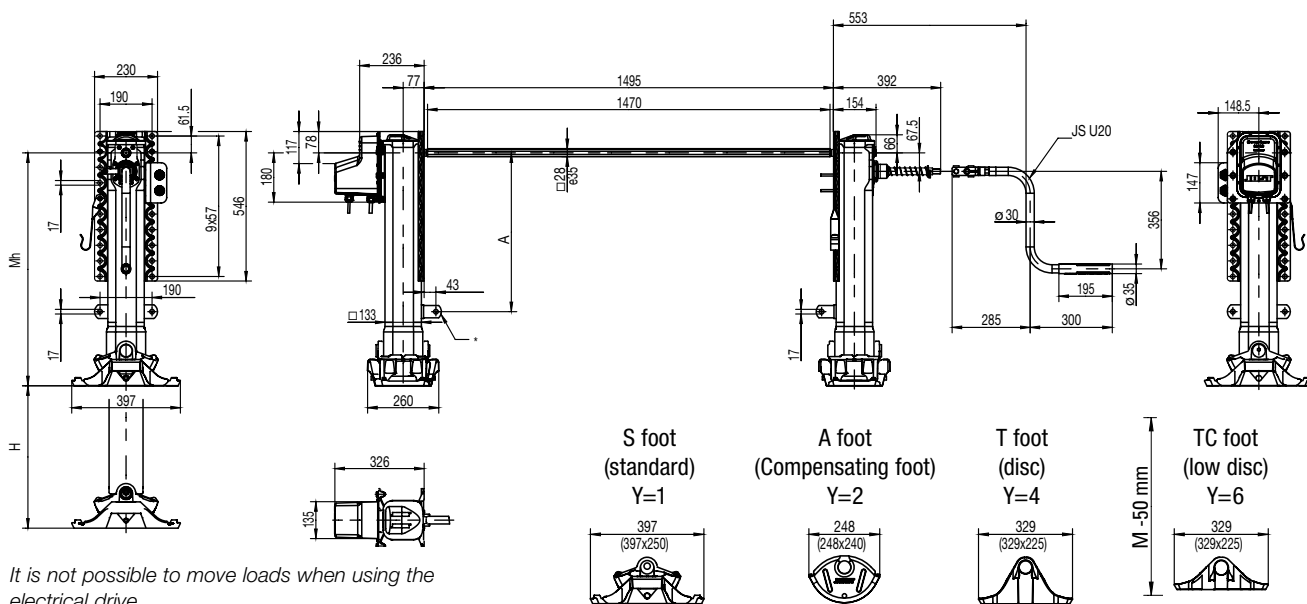
A foot  
(Compensating foot)



- Type approval electromagnetic compatibility (EMC) in accordance with ECE E1 10R-043838
- Certificate for type-test approval for electrical installations used in vehicles carrying hazardous goods (ADR) in accordance with TÜ.EGG. 095-05



# Technical specifications



## Selection table/Versions available

Order No.	M (mm)	H (mm)	A (mm)	Back plate
B0103-0Y0000ED	900	560	630	Double plate
B0203-0Y0000ED	850	520	580	Double plate
B0303-0Y0000ED	800	470	530	Double plate
B0403-0Y0000ED	750	430	480*	Double plate
B0503-0Y0000ED	700	400	430*	Double plate
B0603-0Y0000ED	650	350	380*	Double plate

Y=1 S foot, Y=2 A foot Y=4 T foot, Y=6 TC foot

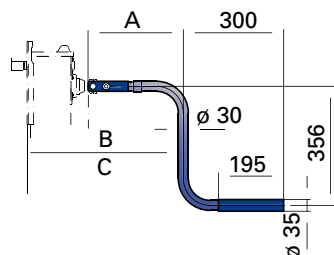
### Note:

Other models available on request. Cranks and connection shafts need to be ordered separately and are shipped unassembled.

## Crank handles

Various crank handle lengths for individual adjustment to the vehicle width.

Order No.	A (mm)	B (Low gear, mm)	C (High gear, mm)
JS U20	285	543	553
JS U21	385	634	653
JS U22	405	654	673
JS U23	450	699	718
JS U24	505	754	773
JS U25	550	799	818



## Bolt-on brackets

Order No.	Description
JS E010.001	Bolt-on bracket, loose
JS E010.002	Clamp for bolt-on bracket
JS E020.004	Nut and bolt for clamp



\* Screw-on brackets are not supplied for the combination of mounting height 650-750 with double back plate and plate below. For loose screw-on brackets, see accessories.

## Connection shaft

Order No.	Length of connection shaft (mm)
JS L01	1340
JS L02	1450
JS L03	1470
JS L04	1500
JS L05	1505
JS L06	1575
JS L07	1605
JS L08	1635
JS L09	1700
JS L10	1790

## Lubricating nipple for lubricating spindles and pinde nuts.

Order No.	Description
JS E008.4000	Lubricating nipple