

Display - Ermax Rear bumper

Show the Ermax lamps with light at customer visits

Rear Bumper, shortened

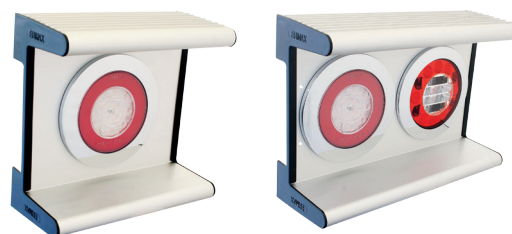
This shortened rear bumper makes it possible for the customer to see the new build-in lamp with small build-in depth from the Ermax programme. Build-in depth of the Ermax TM5 lamp is smaller than the corresponding Ermax TM7 lamp – is also shown at the display type 2.

With our new demo box it is also possible to connect the lamps and activate the various functions.

2 types are available

Type 1 - with Ermax TM5 LED rear lamp with small build-in depth.

Type 2 - with Ermax TM5 LED rear lamp and TM7 rear lamp. Different build-in depth and lens material.



Rear Bumper, complete with LED lights

Mounted with Ermax TM5 Tail lights, Licenseplate lights and outer end markers - mounted on rack.

Measure (LxDxH): 2400 x 120 x 250 mm / Length incl. outer end markers is 2780 mm.



Time of delivery: 4 weeks from order

Functions and characteristics		
Description	Net price	Article No.
Demo rear bumper – with TM5 rear lamp	€ 50,00	009 100 105
Demo rear bumper – with TM5 and TM7 rear lamp	€ 75,00	009 100 106
Rear Bumper, complete with LED lights (TM 5 Tail lights) incl. mounting foot	€ 650,00	009 100 100
Accessories		
Description	Net price	Article No.
Demo-box with integrated batteries – 3 x 9 V	€ 96,00	099 859 950
Demo-box with 220V connection by means of 150 cm net cable, Schuko Plug	€ 96,00	099 859 955